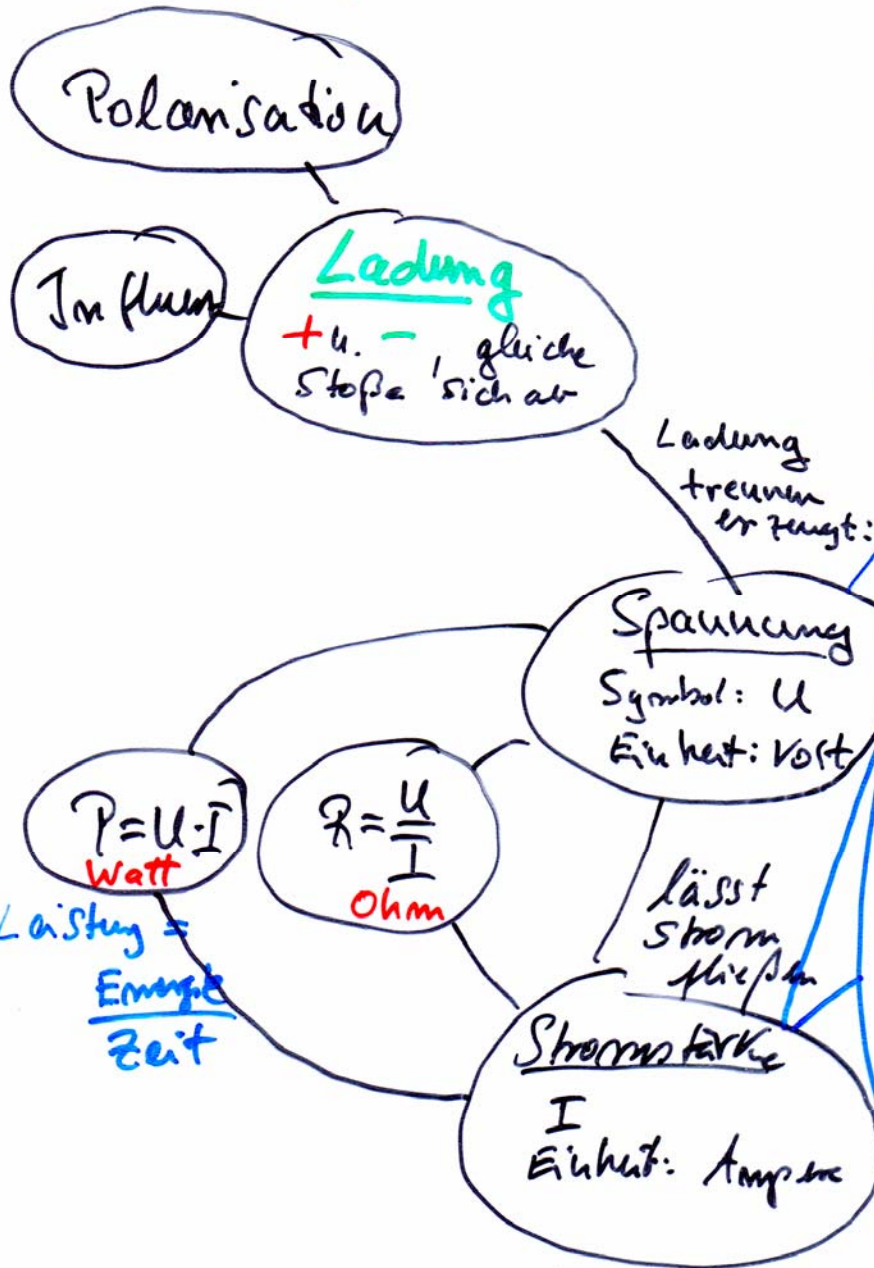


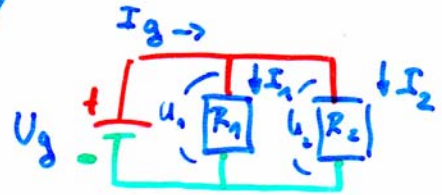
Mind Map Elektrizitätslehre

Grundbegriffe



Anwendungen

Parallelschaltung

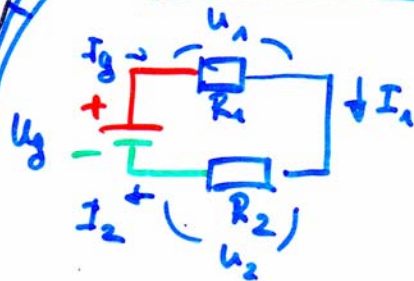


$$U_g = U_1 = U_2$$

$$I_g = I_1 + I_2$$

$$\frac{1}{R_E} = \frac{1}{R_1} + \frac{1}{R_2}$$

Reihenschaltung



$$I_g = I_1 = I_2$$

$$U_g = U_1 + U_2$$

$$R_E = R_1 + R_2$$